

Floor Box Product Catalog

FLOOR BOX ASSEMBLIES AND ACCESSORIES FOR
RESIDENTIAL & COMMERCIAL CONSTRUCTION

*INCLUDES THE NEW SLIDERBOX® FLOOR BOX



**ALLIED
MOULDED
PRODUCTS, Inc.**

NEW—Adjustable Single Gang Floor Box Solution

Allied Moulded is expanding its line of floor box assemblies to include the new SLIDERBOX® floor box with flip lid cover. The new box is designed with Allied Moulded's patented SLIDERBOX® feature, and can be adjusted and installed in the "up" position to aid in easier installation of flooring material.

The new floor box is available in 3 cover finishes; brass, dark bronze, and nickel. The box is sold as a complete assembly kit and is ready for installation.



Scan QR code to browse all floor box models and replacement parts!

Features & Benefits

- Designed for use in raised wood floor construction and multiple floor substrate materials. This allows for quick and easy floor installation.
- No need to remove or relocate mounting screws to reposition the box. Simply loosen the screws and slide the box up or down.
- Three cover options; brass, dark bronze, or nickel
- Flip lid cover seals water tight and allows assembly to meet UL 514C scrub-water exclusion test
- Decorator type Tamper Resistant (TR) receptacle; 15 amp 125 volt with ground (NEMA config. 5-15R)
- Provisions for cable entry through molded-in Speed Klamps™ or 1/2" bottom knockouts
- Substrate thickness of 1-9/16" when utilizing positioning tabs. *Max floor substrate of 2"



SBFB-1



SBFB-1N



SBFB-1DB

Installation Made Easy!

With the new SLIDERBOX® floor box, installation of subfloor materials has become less of a daunting task. There's no need to remove or relocate the mounting screws during installation, making this one-person assembly quick and simple! Simply install the floor box in the highest position, and install subfloor around the box.



1 *Find and install floor box on solid floor joist; mount with slider plate in the "up" position



2 Move floor box in highest position by loosening slider plate screws, install sub floor around raised box

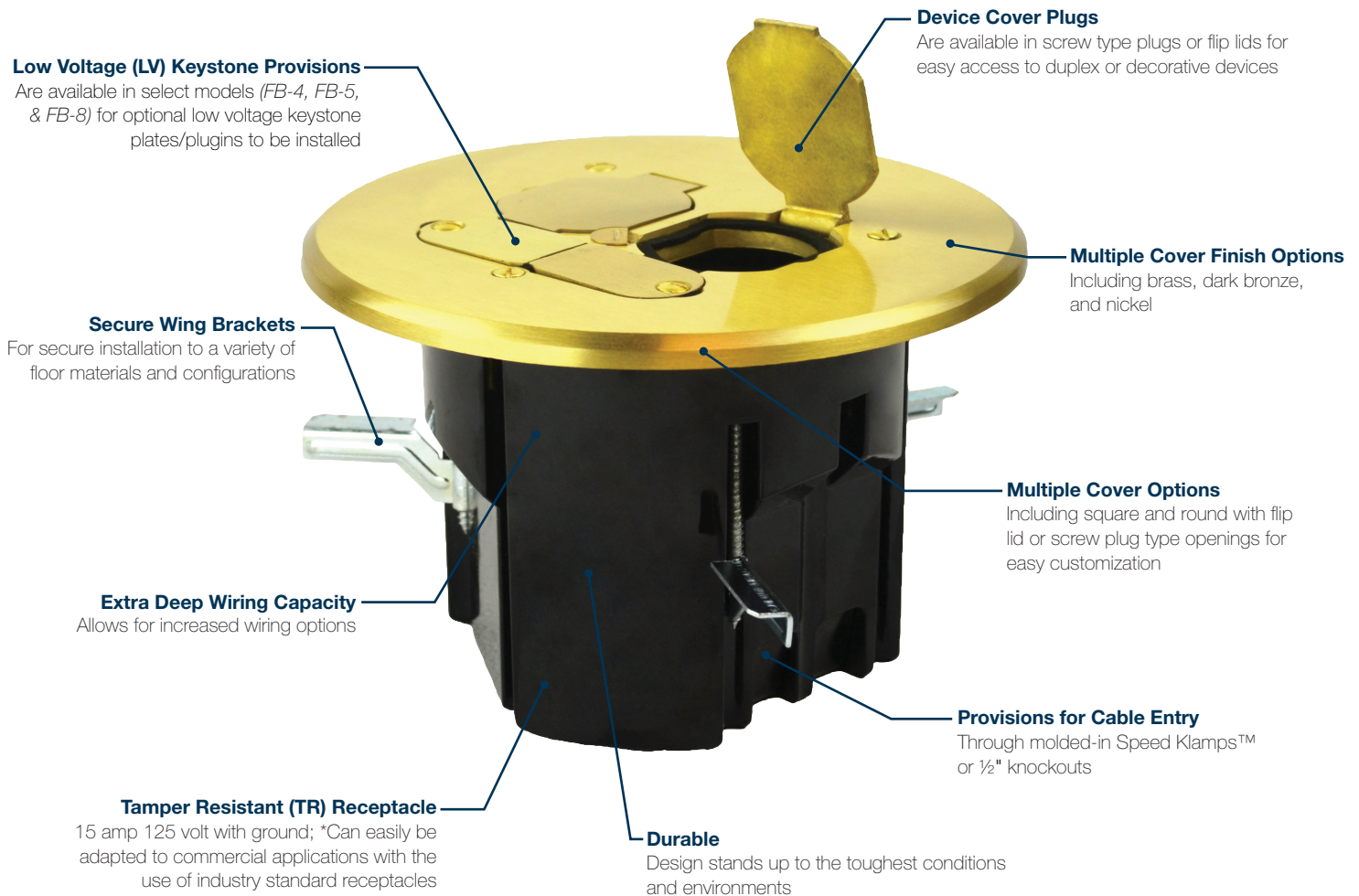


3 Install desired floor material around the raised floor box. The raised box allows for easier installation by contractors



4 Adjust box height to achieve a flush position; wire the included device and install the gasket and cover

Features & Benefits



Low Voltage Keystone Openings Available

Low voltage keystone openings are available for use with select models (FB-4, FB-5, & FB-8). Keystone can be installed from industry standard LV keystone plugs. Different part numbers provide various LV plugin configurations. **NOTE: Keystone plugins are not included in retail packaging.**



SLIDERBOX® Adjustable Floor Box

A new addition to the floor box line includes an adjustable floor box option, designed with our patented SLIDERBOX® feature, allowing for easy adjustments and easier installation of flooring materials. There's no need to remove or relocate the mounting screws to reposition the box up or down. ***Max substrate – 2"**



Device Options

We give you the option to choose your device. Floor box options include simplex, duplex, or decorative style devices for single, round, and two gang boxes! **NOTE: Device options vary depending on the model chosen.**



***Note: Additional floor box models may have features and benefits unlisted here.**



ALLIED
MOULDED
PRODUCTS, Inc.

www.alliedmoulded.com

Features & Benefits

2

Single Gang Floor Box Assemblies

Features & Benefits

- Optional cover material types: brushed brass, dark bronze, or nickel
- Cover plug screws and flip lids seals are water tight and allow assembly to meet UL 514C scrub-water exclusion test
- TR Tamper Resistant receptacle; 15 amp 125 volt with ground (NEMA config. 5-15R). *Note: Can easily be adapted to commercial applications with the use of industry standard receptacles*
- Extra deep wiring capacity at 24.5 (24-SBFB) cubic inches
- UL® listed in accordance with the requirements for floor boxes in Article 314.27 of the NEC
- Provisions for cable entry through molded-in Speed Klamps™ or 1/2" knockouts
- Simplex, duplex, and decorative style devices are available (specific devices may vary between models)
- Steel wing brackets (FB-1, FB-2, FB-6 models); Galvanized steel screw (SBFB models) for secure installation
- Basic rectangular exterior profile in all single gang boxes for quick and easy cut-in installation



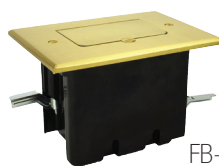
Single Gang Product Line



FB-1N



FB-2DB



FB-6

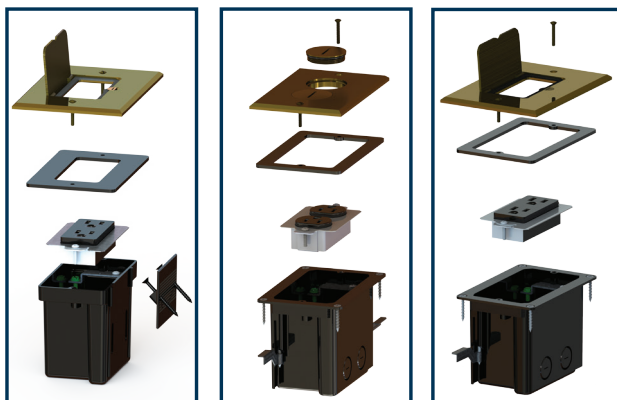


SBFB-1N

Cu. In Volume	Catalog Number	Cover Finish	Cover Type	Device	LV Provision	UPC# 85339	Std. Pkg. Qty.	Std. Wt. (lb.)
24.5	FB-1	Brass	Screw Plug	Simplex	No	94123	6	9
24.5	FB-1N	Nickel	Screw Plug	Simplex	No	94128	6	9
24.5	FB-2	Brass	Screw Plug	Duplex	No	94124	6	9
24.5	FB-2DB	Dark Bronze	Screw Plug	Duplex	No	99601	6	9
24.5	FB-2N	Nickel	Screw Plug	Duplex	No	94129	6	9
24.5	FB-6	Brass	Flip Lid	Decorative	No	97233	6	10
24.5	FB-6DB	Dark Bronze	Flip Lid	Decorative	No	97235	6	10
24.5	FB-6N	Nickel	Flip Lid	Decorative	No	97234	6	10
24.0	SBFB-1	Brass	Flip Lid	Decorative	No	97528	6	10
24.0	SBFB-1DB	Dark Bronze	Flip Lid	Decorative	No	97529	6	10
24.0	SBFB-1N	Nickel	Flip Lid	Decorative	No	97530	6	10

Specifications & Replacement Parts

Specifications: Single Gang



SBFB-1

FB-2

FB-6

- Cut-in hole size: 2.625" x 4.437"
- Box size (no flange): 3.5" (D) x 2.498" (W) x 4.312" (H) (SBFB H=4.4")
- Flange outside dimension: 3.250" x 4.883" (SBFB-no flange)
- Cover dimension (FB-1/FB-2): 0.217" (D) x 3.5" (W) x 5.125" (H)
- Cover dimension (SBFB-1/FB-6): 0.222" (D) x 4" (W) x 5.625" (H)
- Box wire capacity: 24.5 cu. in. (SBFB 24.0 cu. in.)
- (2) ½" knockouts on bottom and (2) ½" knockouts on the side wall
- (2) molded-in Speed Klamps™ for securing NM cable
- Part material types:
 - Cover: brushed brass, nickel, or dark bronze
 - Screw plug/Flip Lid: matches cover with nitrile O-ring or gasket
 - Gasket: closed-cell rubber
 - Box screws and wings: galvanized steel
 - Dust plate: galvanized steel
 - Device: UL® listed residential grade w/ copper terminals & brass ground
- Receptacle rating: 15 amp, 125V tamper resistant with ground (Article 406 of the NEC; requirements for Tamper Resistant receptacles in dwellings)
- Assembly meets UL 514C scrub-water exclusion test requirement

*All dimensions are in inches.

Replacement Part Kits



FB-1NCVR






FB-2CVR



SBFB-1DBCVR



FB-BRPLG

Catalog Number	Used With	Cover Finish	Cover Type	Device	LV Provision	UPC# 85339	Std. Pkg Qty.	Std. Wt. (lb.)
FB-1CVR	FB-1	Brass	Screw Plug	Simplex	No	94131	1	1
FB-1NCVR	FB-1N	Nickel	Screw Plug	Simplex	No	94132	1	1
FB-2CVR	FB-2	Brass	Screw Plug	Duplex	No	94133	1	1
FB-2DBCVR	FB-2DB	Dark Bronze	Screw Plug	Duplex	No	99602	1	1
FB-2NCVR	FB-2N	Nickel	Screw Plug	Duplex	No	94134	1	1
FB-6CVR	FB-6	Brass	Flip Lid	Decorative	No	97242	1	1
FB-6DBCVR	FB-6DB	Dark Bronze	Flip Lid	Decorative	No	97244	1	1
FB-6NCVR	FB-6N	Nickel	Flip Lid	Decorative	No	97243	1	1
FB-BRPLG	FB-1,FB-2	Brass	Screw Plug	Simplex, Duplex	No	94137	1	1
FB-DBPLG	FB-2DB	Dark Bronze	Screw Plug	Simplex	No	99605	1	1
FB-NPLG	FB-1N, FB-2N	Nickel	Screw Plug	Simplex, Duplex	No	94138	1	1
 SBFB-1CVR	SBFB-1	Brass	Flip Lid	Decorative	No	97617	1	1
 SBFB-1DBCVR	SBFB-1DB	Dark Bronze	Flip Lid	Decorative	No	97619	1	1
 SBFB-1NCVR	SBFB-1N	Nickel	Flip Lid	Decorative	No	97618	1	1



ALLIED
MOULDED
PRODUCTS, Inc.

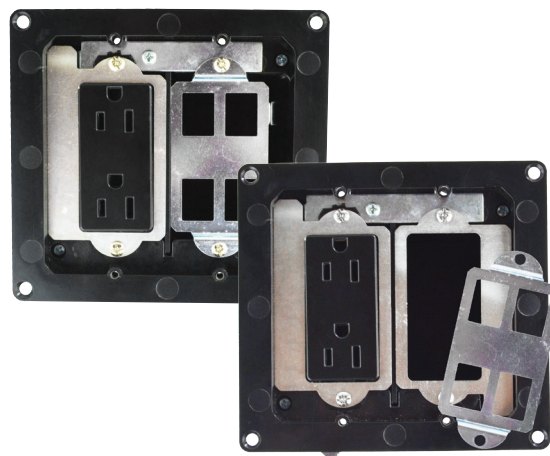
www.alliedmoulded.com

Single Gang Floor Boxes

Two Gang Floor Box Assemblies

Features & Benefits

- Optional cover material types: brushed brass, dark bronze, or nickel
- Includes additional dust plate for easy customization
- Low voltage (LV) openings available for industry standard keystone plugins to be installed
- Flip lids seal water tight and allow assembly to meet UL 514C scrub-water exclusion test
- TR Tamper Resistant receptacle; 15 amp 125 volt with ground (NEMA config. 5-15R). *Note: Can easily be adapted to commercial applications with the use of industry standard receptacles*
- Extra deep wiring capacity at 44.5 cubic inches
- UL listed in accordance with the requirements for floor boxes in Article 314.27 of the NEC
- Provisions for cable entry through molded-in Speed Klamps™ or 1/2" knockouts
- Steel wing brackets for secure installation
- Basic square exterior profile for quick and easy cut-in installation



FB-5 models include additional dust plate for customization of floor box assembly. The plates are easily interchangeable with no additional accessories required for installation!

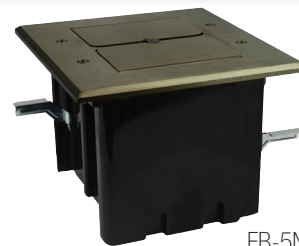
Two Gang Product Line



FB-5



FB-5DB



FB-5N

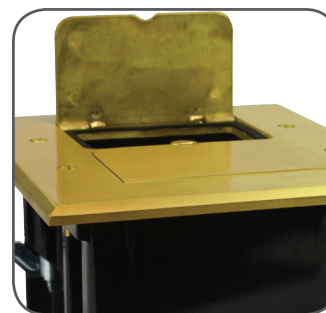
Cu. In Volume	Catalog Number	Cover Finish	Cover Type	Device	LV Provision	UPC# 85339	Std. Pkg. Qty.	Std. Wt. (lb.)
44.5	FB-5	Brass	Flip Lid	Decorative/LV	Yes	99075	6	14
44.5	FB-5DB	Dark Bronze	Flip Lid	Decorative/LV	Yes	99076	6	14
44.5	FB-5N	Nickel	Flip Lid	Decorative/LV	Yes	99077	6	14

Specifications: Two Gang



FB-5

- Cut-in hole size: 4.625" x 4.437"
- Box size (no flange): 4.056" (D) x 4.498" (W) x 4.335" (H)
- Flange outside dimension: 5.508" x 5.133"
- Cover dimension: .222" (D) x 6.000" (W) x 5.625" (H)
- (4) Dust plate keystone openings(FB-5): .575" x .765"
- Box wire capacity: 44.5 cu. in.
- (2) 1/2" knockouts on bottom
- (4) molded-in Speed Klamps™ for securing NM cable
- Part material types:
 - Cover: brushed brass, nickel, or dark bronze
 - Flip Lids: matches cover
 - Gaskets: closed-cell rubber
 - Box screws and wings: galvanized steel
 - Dust plates: galvanized steel
 - Device: UL listed residential grade w/ copper terminals & brass ground
- Receptacle rating: 15 amp, 125V tamper resistant with ground (Article 406 of the NEC; requirements for Tamper Resistant receptacles in dwellings)
- Assembly meets UL 514C scrub-water exclusion test requirement



*All dimensions are in inches.

Replacement Part Kits



FB-5CVR



FB-5DBCVR



FB-5NCVR

Catalog Number	Used With	Cover Finish	Cover Type	Device	LV Provision	UPC# 85339	Std. Pkg. Qty.	Std. Wt. (lb.)
FB-5CVR	FB-5	Brass	Flip Lid	Decorative	Yes	99081	1	1
FB-5-DBCVR	FB-5DB	Dark Bronze	Flip Lid	Decorative	Yes	99082	1	1
FB-5NCVR	FB-5N	Nickel	Flip Lid	Decorative	Yes	99083	1	1



Round Floor Box Assemblies

Features & Benefits

- Optional cover material types: brushed brass, dark bronze, or nickel
- Cover plug screws and flip lids seal water tight and allow assembly to meet UL 514C scrub-water exclusion test
- TR Tamper Resistant receptacle; 15 amp 125 volt with ground (NEMA config. 5-15R). *Note: Can easily be adapted to commercial applications with the use of industry standard receptacles*
- Low voltage (LV) openings available for industry standard keystone plugins to be installed
- Extra deep wiring capacity at 19.5 and 24.5 cubic inches
- UL listed in accordance with the requirements for floor boxes in Article 314.27 of the NEC
- Provisions for cable entry through molded-in Speed Klamps™ or 1/2" knockouts
- Steel wing brackets for secure installation
- Basic round exterior profile for quick and easy cut-in installation



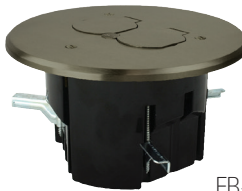
Round Box Product Line



FB-3DB



FB-4



FB-7N

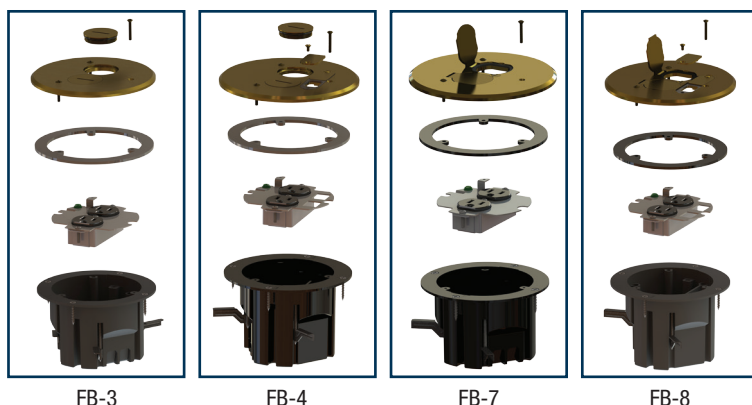


FB-8DB

Cu. In Volume	Catalog Number	Cover Finish	Cover Type	Device	LV Provision	UPC# 85339	Std. Pkg. Qty.	Std. Wt. (lb.)
24.5	FB-3	Brass	Screw Plug	Duplex	No	94125	6	10
24.5	FB-3DB	Dark Bronze	Screw Plug	Duplex	No	99603	6	10
24.5	FB-3N	Nickel	Screw Plug	Duplex	No	94130	6	10
19.5	FB-4	Brass	Screw Plug	Duplex/LV	Yes	99072	6	12
19.5	FB-4DB	Dark Bronze	Screw Plug	Duplex/LV	Yes	99073	6	12
19.5	FB-4N	Nickel	Screw Plug	Duplex/LV	Yes	99074	6	12
24.5	FB-7	Brass	Flip Lid	Duplex	No	97236	6	11
24.5	FB-7DB	Dark Bronze	Flip Lid	Duplex	No	97238	6	11
24.5	FB-7N	Nickel	Flip Lid	Duplex	No	97237	6	11
19.5	FB-8	Brass	Flip Lid	Duplex/LV	Yes	97239	6	11
19.5	FB-8DB	Dark Bronze	Flip Lid	Duplex/LV	Yes	97241	6	11
19.5	FB-8N	Nickel	Flip Lid	Duplex/LV	Yes	97240	6	11

Specifications & Replacement Parts

Specifications: Round



- Cut-in hole size: 4.0" Dia. (standard hole saw size)
- FB-3/FB-7 box size (no flange): 3.0" (Deep) x 3.936" dia.
- FB-4/FB-8 box size (no flange): 3.433" (Deep) x 3.936" dia.
- Flange outside dimension: FB-3/FB-7 (5.0" dia.), FB-4/FB-8 (5.25" dia.)
- Cover dimension (FB-3/): 5.25" dia. x 0.217" thickness
- Cover dimension (FB-4/FB-7/FB-8): 5.75" dia. x 0.237" thickness
- (2) Dust plate keystone openings (FB-4/FB-8): 0.575" x 0.765"
- Box wire capacity: FB-3/FB-7 (24.5 cu. in.), FB-4/FB-8 (19.5 cu. in.)
- FB-3/FB-7: (2) ½" knockouts on bottom
- FB-4/FB-8: (1) ½" knockout on bottom
- (4) molded-in Speed Klamps™ for securing NM cable
- Part material types:
 - Cover: brushed brass, nickel, or dark bronze
 - Screw plugs: matches cover with nitrile O-ring
 - Low Voltage Plates: (FB-4/FB-8) with closed-cell gaskets
 - Gasket: closed-cell rubber
 - Box screws and wings: galvanized steel
 - Dust plate: galvanized steel
 - Device: nonmetallic with copper terminals and brass ground
- Receptacle rating: 15 amp, 125V tamper resistant with ground (Article 406 of the NEC; requirements for Tamper Resistant receptacles in dwellings)
- Assembly meets UL 514C scrub-water exclusion test requirement

*All dimensions are in inches.

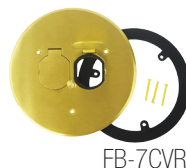
Replacement Part Kits



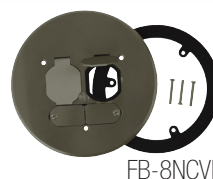
FB-3NCVR



FB-4DBCVR



FB-7CVR



FB-8NCVR



FB-BRPLGLV

Catalog Number	Used With	Cover Finish	Cover Type	Device	LV Provision	UPC# 85339	Std. Pkg. Qty.	Std. Wt. (lb.)
FB-3CVR	FB-3, FB-7	Brass	Screw Plug	Duplex	No	94135	1	1
FB-3DBCVR	FB-3DB, FB-7DB	Dark Bronze	Screw Plug	Duplex	No	99604	1	1
FB-3NCVR	FB-3N, FB-7N	Nickel	Screw Plug	Duplex	No	94136	1	1
FB-4CVR	FB-4, FB-8	Brass	Screw Plug	Duplex/LV	Yes	99078	1	1
FB-4DBCVR	FB-4DB, FB-8DB	Dark Bronze	Screw Plug	Duplex/LV	Yes	99079	1	1
FB-4NCVR	FB-4N, FB-8N	Nickel	Screw Plug	Duplex/LV	Yes	99080	1	1
FB-7CVR	FB-7, FB-3	Brass	Flip Lid	Duplex	No	97245	1	1
FB-7DBCVR	FB-7DB, FB-3DB	Dark Bronze	Flip Lid	Duplex	No	97247	1	1
FB-7NCVR	FB-7N, FB-3N	Nickel	Flip Lid	Duplex	No	97246	1	1
FB-8CVR	FB-8, FB-4	Brass	Flip Lid	Duplex/LV	Yes	97248	1	1
FB-8DBCVR	FB-8DB, FB-4DB	Dark Bronze	Flip Lid	Duplex/LV	Yes	97250	1	1
FB-8NCVR	FB-8N, FB-4N	Nickel	Flip Lid	Duplex/LV	Yes	97249	1	1
FB-BRPLG	FB-3, FB-4	Brass	Screw Plug	Duplex/LV	FB-4	94137	1	1
FB-DBPLG	FB-3DB, FB-4DB	Dark Bronze	Screw Plug	Duplex/LV	FB-4DB	99605	1	1
FB-NPLG	FB-3N, FB-4N	Nickel	Screw Plug	Duplex/LV	FB-4N	94138	1	1
FB-BRPLGLV	FB-4, FB-8	Brass	Flip Lid	Duplex/LV	Yes	99084	1	1
FB-DBPLGLV	FB-4DB, FB-8DB	Dark Bronze	Flip Lid	Duplex/LV	Yes	99085	1	1
FB-NPLGLV	FB-4N, FB-8N	Nickel	Flip Lid	Duplex/LV	Yes	99086	1	1

Adapter Kits for Industry Standard Concrete Junction Boxes

For use in adapting all residential round floor box assemblies to standard industry concrete junction boxes

Features & Benefits

- Installed floor box assembly meets UL 514C scrub water exclusion test
- Quick and easy installation with fewer floor box and device components
- Floor box comes with a standard TR tamper resistant receptacle; 15 amp, 125 volt with ground (NEMA config. 5-15R)
- Allied Moulded floor box assemblies can be adapted to many standard PVC concrete junction boxes

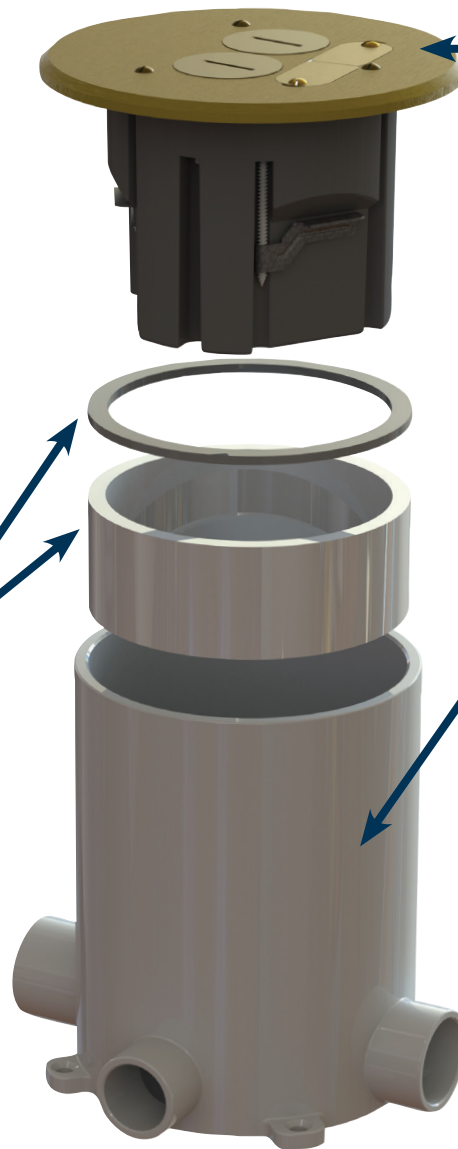
FB-CAK Concrete Adapter Kit

Includes:

- Adapter sealing gasket
- Adapter ring
- Detailed installation instructions



Scan QR code for more information.



Allied Moulded Products, Inc.
Floor Box Assemblies:

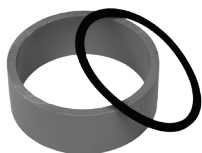
- FB-3 (All Models)
- FB-4 (All Models)
- FB-7 (All Models)
- FB-8 (All Models)



UL® recognized for use with Round PVC Concrete Junction Boxes with an inside diameter of 4-1/2" to 4-9/16".

These include, but are not limited to the following:

- Arlington FLBC4500
- Cantex, 5133758/5133760
- Carlon, E971FB
- Ipex/Sceptor, FB 076954
- Kraloy, FB 078876
- Lew, FB/FBLEW

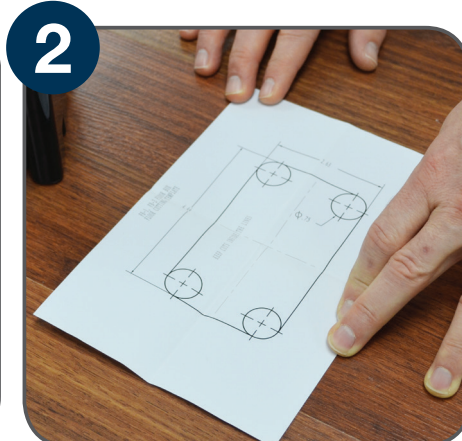


Catalog Number	Component Description	UPC# 85339	Std. Pkg. Qty.	Std. Wt. (lb.)
FB-CAK	Concrete Adapter Kit contains adapter sealing gasket, adapter ring, and detailed installation instructions	99479	6	3

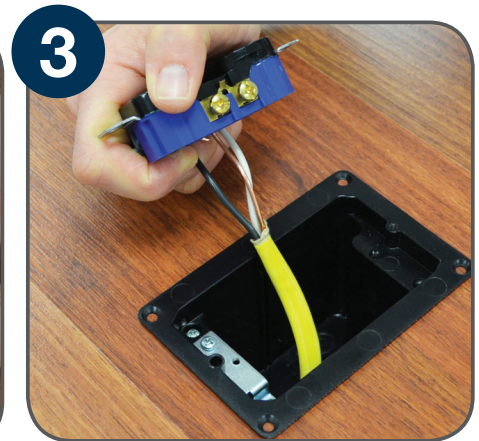
Quick & Simple Installation



1 Find a location in between floor joists and measure the box dimensions according to the template supplied in the installation instruction sheet.



2 Once measured, place the installation template on the floor and cut a hole accordingly. A small drill, jigsaw, or hole saw can be used to precisely cut the hole required.



3 Bring the electrical cable through the preferred box clamp, and place the box down in the hole and secure it with the preferred mounting method. Wire the device according to local electrical code.



4 Once the device has been wired, secure the device and dust plate down into the box using the screws supplied in the packaging.



5 Place the cover gasket on the box flange and position the cover assembly over the gasket to ensure an adequate seal between box and lid is met.



6 Secure the cover to the box with the screws supplied in the packaging. Attach all screw plugs and keystone plugs as required.

The Contractor's Choice

Allied Moulded Products, Inc. (Allied Moulded) is the Contractor's Choice for nonmetallic electrical boxes in today's residential markets. Leveraging more than half-a-century of experience, Allied Moulded has grown to become the benchmark of quality within the electrical industry. Our full-service molding operation includes expertise in compression and injection molding, using thermoset and thermoplastic materials, and provides our customers with a superior product at a competitive price. Our unrelenting focus on service, delivery, value, innovation and technology in everything we make and do, has made us who we are today.

Allied Moulded offers a full range of electrical outlet box products and specialty products for residential construction. All products are designed with both the electrical professional and the do-it-yourself home owner in mind and have earned a reputation for strength and rigidity while remaining innovative.



www.alliedmoulded.com



**ALLIED
MOULDED
PRODUCTS, Inc.**

222 North Union Street
Bryan, OH 43506

Phone: 800.722.2679
Fax: 800.237.7269

www.alliedmoulded.com



Available Through: